
Transmig 500 pulse Parts List

Issue 2 (March 86)

Please note that some of the items listed
may be on extended delivery.

PARTS LIST

When ordering spare parts, please quote both the Part Number and the Description. Customers should also give the type and serial number of the unit for which the parts are required.

Item	Part No.	Cat. Ref.	Description
1	1412110	-	Front panel
2	1412111	-	Side panel - Left
3	1412112	-	Name plate
4	1412113	S2	Switch - remote ON/OFF
5	1412114	M1	Ammeter - welding current
6	1412115	M2	Voltmeter - welding voltage
7	1412116	-	Handle
-	1412117	-	Bar
-	1412118	-	Screw M5 x 60
-	1412119	-	Nut M5
-	1412120	-	Screw
8	1412121	-	Side panel - top left
9	1412122	S3	Switch - pulse amplitude
10	1412123	-	Top cover
11	1412124	M3	Ammeter - pulse
12	1412125	-	Lifting eye
13	1412126	S4	Switch - pulse mode
14	1412127	-	Side panel - top right
15	1412047	RV1	Potentiometer - welding current
-	1412048	-	Knob (for item 15)
-	1412128	-	Support bracket (for item 15)
16	1411687	LP1	Lamp - ON/OFF
17	1411689	S1	Switch ON/OFF
-	1412129	-	Knob (for item 17)
18	1412049	SK1	Socket - 3 pin (remote) - Note 1
19	1412130	-	Side panel - right
20	1412131	-	Axle
21	1412132	-	Wheel fixed
22	017954	SK2	Socket - 8 pin (wirefeed unit) - Note 1
23	117242	SK4	Terminal - welding output
24	117242	SK3(A,B,C)	Terminals - work return
25	1409223	-	Wheels - swivel
26	1412133	-	Plastic bushing

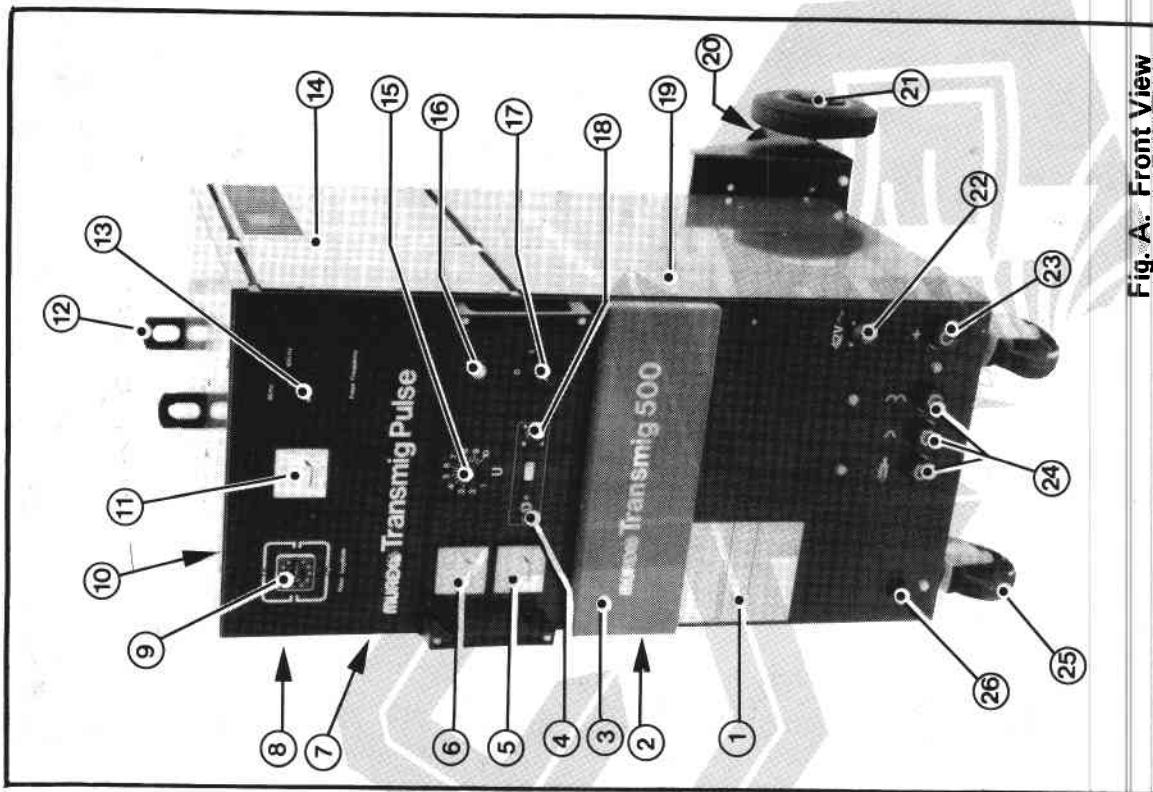


Fig. A. Front View

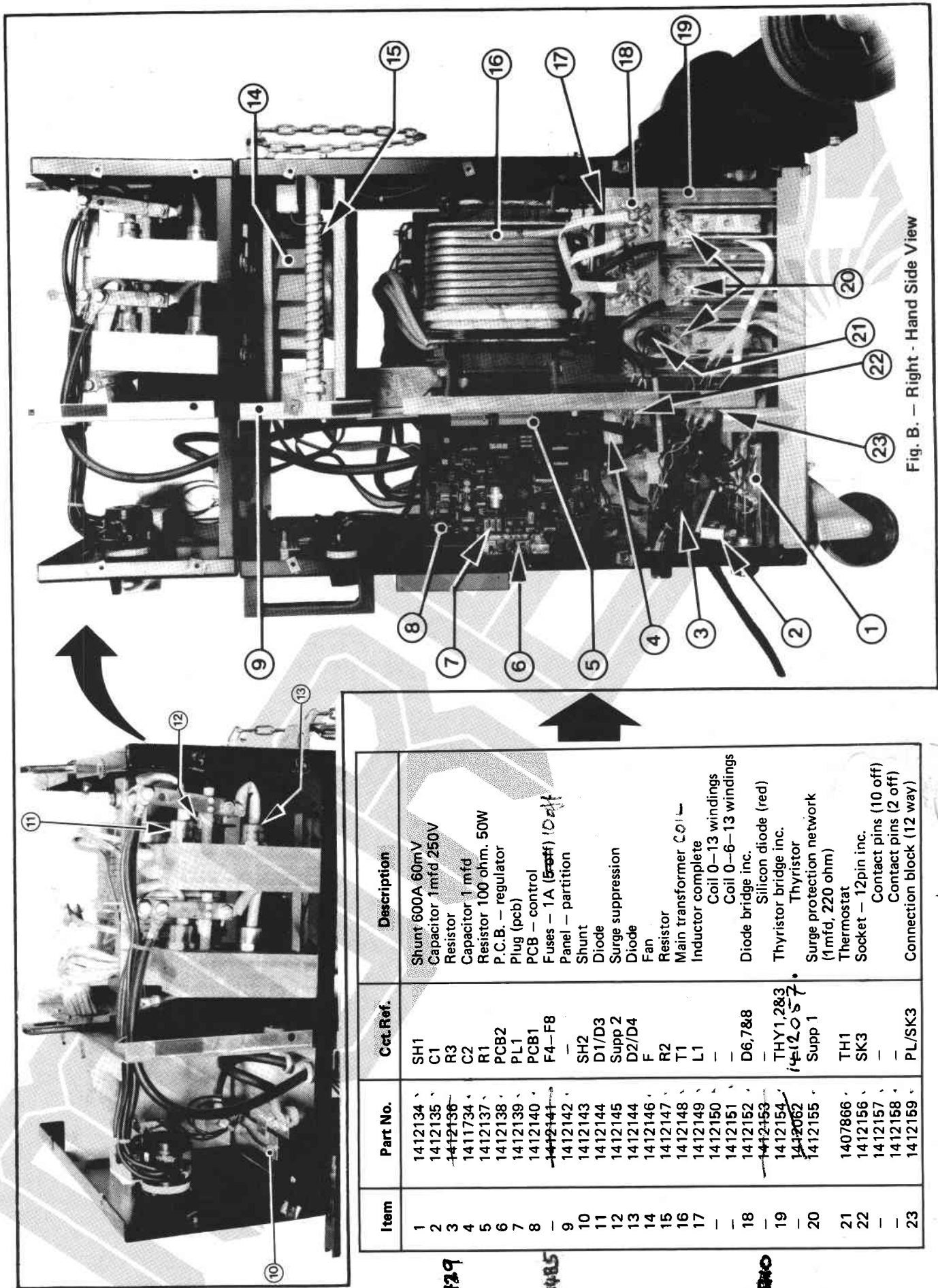


Fig. B. - Right - Hand Side View

Item	Part No.	Cct. Ref.	Description
1	1412134	SH1	Shunt 600A 60mV
2	1412135	C1	Capacitor 1mfd 250V
3	1412136	R3	Resistor
4	1411734	C2	Capacitor 1 mfd
5	1412137	R1	Resistor 100 ohm. 50W
6	1412138	PCB2	P.C.B. - regulator
7	1412139	PL1	Plug (pcb)
8	1412140	PCB1	PCB - control
9	1412141	F4-F8	Fuses - 1A (5-off) 10-off
10	1412142	-	Panel - partition
11	1412143	SH2	Shunt
12	1412144	D1/D3	Diode
13	1412145	Supp 2	Surge suppression
14	1412146	D2/D4	Diode
15	1412147	F	Fan
16	1412148	R2	Resistor
17	1412149	T1	Main transformer COI
18	1412150	L1	Inductor complete Coil 0-13 windings
19	1412151	-	Coil 0-6-13 windings
20	1412152	D6,7,8	Diode bridge inc. Silicon diode (red)
21	1412153	-	Thyristor bridge inc.
22	1412154	THY1,2,3	Thyristor
23	1412062	i4-12057	Surge protection network (1mfd, 220 ohm)
	1412155	Supp 1	Thermostat
	1407866	TH1	Socket - 12pin inc.
	1412156	SK3	Contact pins (10 off)
	1412157	-	Contact pins (2 off)
	1412158	-	Connection block (12 way)
	1412159	PL/SK3	

1411729

1411825

1412060

1412679 Main Transformer

Item	Part No.	Cct. Ref.	Description
1	1412160	—	Platform
2	1412161	D9,10,11	Diode bridge
3	1412162	—	Support — right
4	1412163	—	Panel — rear
5	1412164	—	Clamp
6	1412165	TB2	Terminal block — 3 way
7	1412166	TB3	Terminal block — mains input selection
8	1412167	—	Plastic bushing
9	1412168	—	Cylinder support
—	1411685	—	Chain (700mm)
10	1412169	—	Fan support
11	1412170	T2	Coil 220V
—	1412171	—	Coil 380—500V
12	1412172	T2	Transformer complete 220V
—	1412173	—	Transformer complete 380—500V
13	1412174	Var 1	Varistor
14	1412175	—	Clips
15	1412091	TB4	Terminal block — mains selection
16	1412176	C4	Capacitor 2.5mfd. — fan
—	1412177	TB5	Terminal block — fan
17	1412178	C3	Capacitor 0.1mfd 250V
18	1412179	—	Fan plate
19	1412180	MC1	Contactor 42V

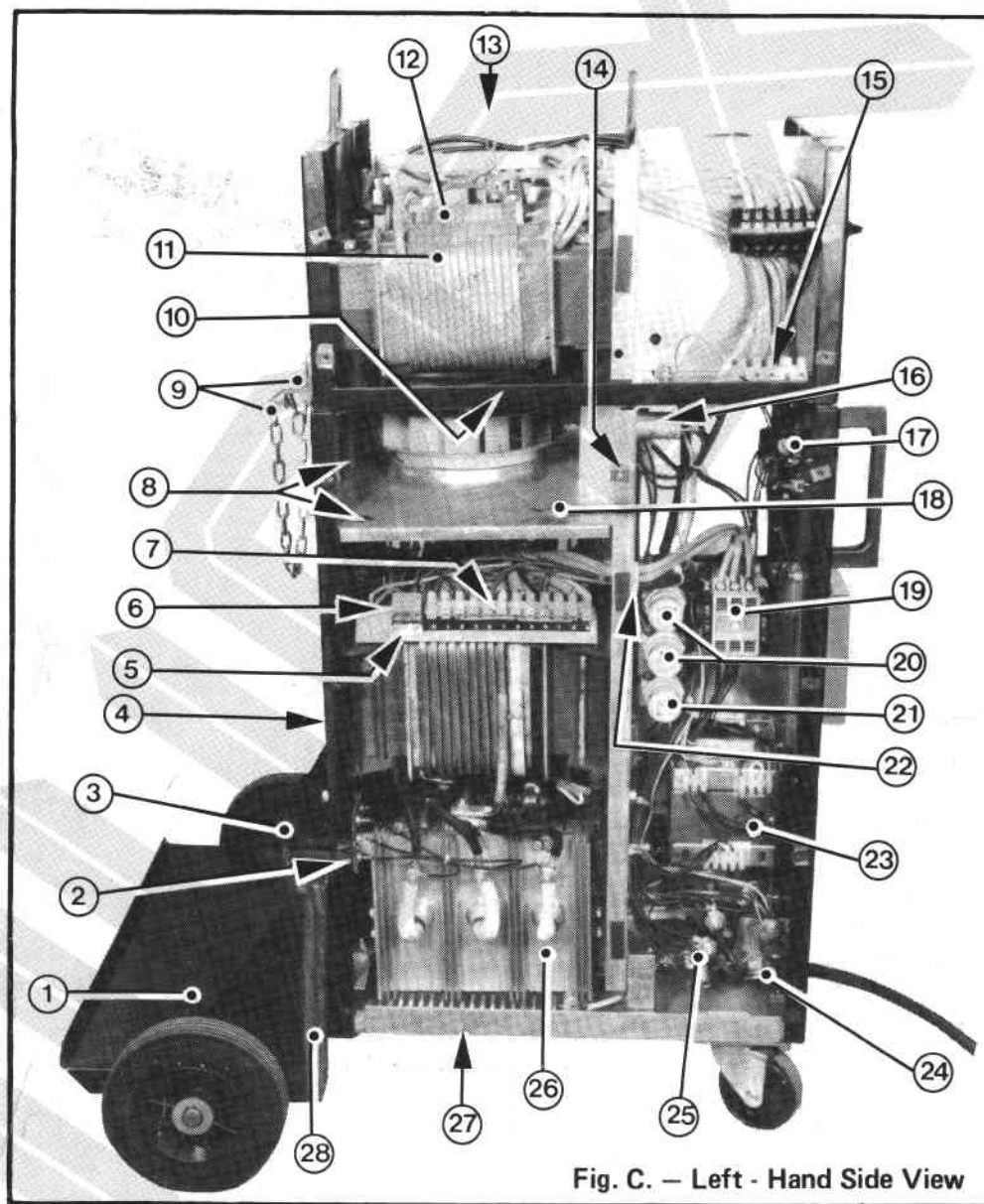
Item	Part No.	Cct. Ref.	Description
20	1412181	F1,F2	Fuse—slow blow—4A
—	1412182	—	Holder (item 20)
21	1412183	F3	Fuse — slow blow — 10A
—	1412184	—	Holder (item 21)
22	1412185	—	Plastic bushing
23	1412186	T3	Transformer — Aux. 42V
24	1411728	—	Cable clamp
25	1411715	TB1	Terminal block — mains input
26	1412187	D3,4&5	Main diode bridge inc:
—	1412188	—	Silicon diode (red) 1412144
27	1412189	—	Base plate
28	1412190	—	Support — left

Optional Extras

- 1412191 · Hand remote control unit
- 1412107 · 5M Connection cable
- 1412108 · 10M Connection cable
- 1412192 · 25M Connection cable
- 1412193 · 25M Extension cable

Note 1 —Plugs to fit items 18 and 22 (Fig. A) are available as follows:

- 1412050 · 3 pin plug for item 18 $\frac{1}{3} A$
- 1411740 · 8 pin plug for item 22 $\frac{1}{3} A$



Murex Welding Products Limited
 Hertford Road, Waltham Cross,
 Herts. EN8/7RP. England
 Telephone: Lea Valley (0992) 710000
 Telex: 25743

Pt.No. 100414
Issue 2