

Spare parts Transmig 333S

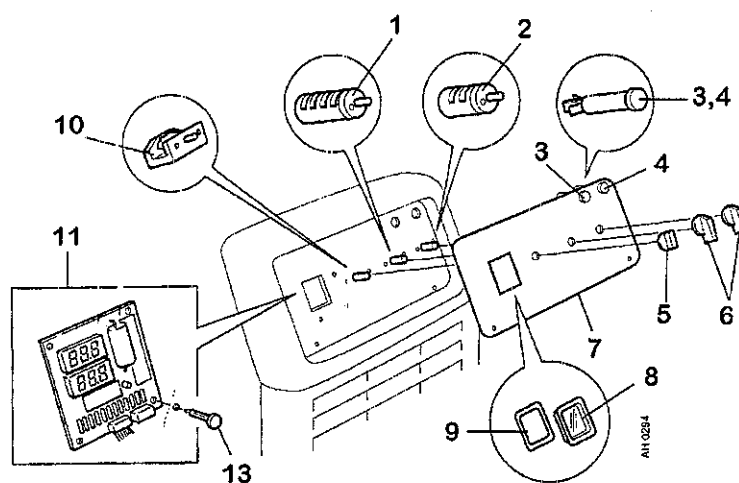
Ordering numbers for Transmig 253 welding rectifiers

| Ordering no. | Denomination | Notes |
|--------------|--------------|-----------------------|
| 1415970 | TM 333s | 400-415 V 3~ 50/60 Hz |

Spare parts list

Spare parts can be ordered through the nearest Murex distributor.

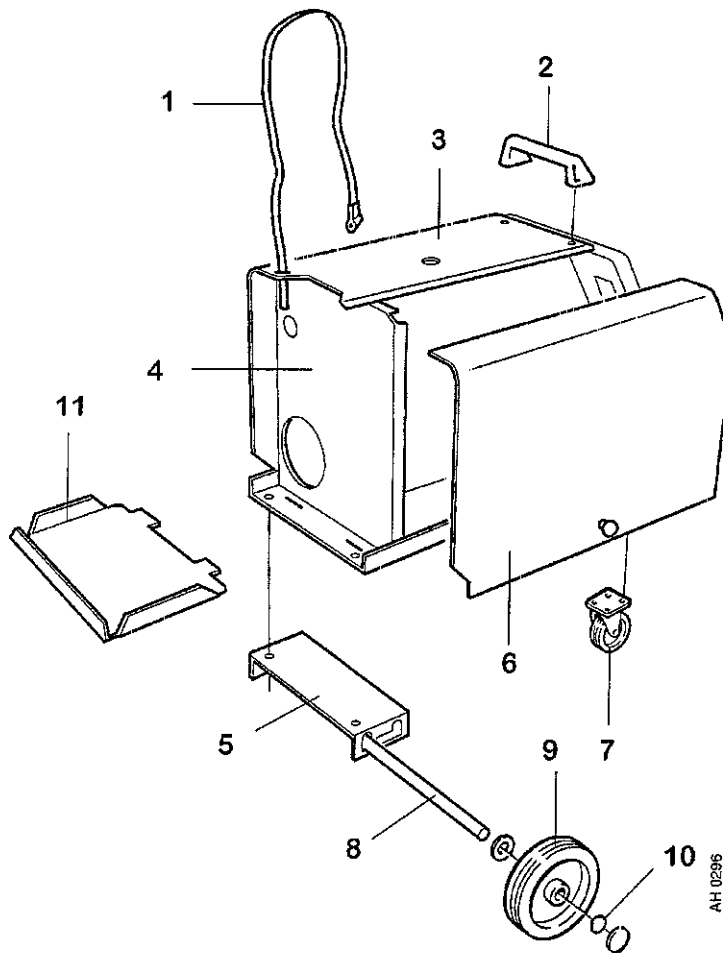
| Item no. | Qty | Ordering no. | Denomination | Notes |
|----------|-----|--------------|------------------|-----------------------------|
| 1 | 1 | 0193 942 001 | Switch | 4 step, item 6 is included |
| 2 | 1 | 0193 945 001 | Switch | 10 step, item 6 is included |
| 3 | 1 | 0369 733 002 | Indicating lamp | 48 VAC, orange |
| 4 | 1 | 0369 733 007 | Indicating lamp | 42 VAC, white |
| 5 | 1 | 0366 296 002 | Knob | |
| 6 | 2 | | Knob | Included in items 1 and 2 |
| 7 | 1 | 0455 610 002 | Panel with text | |
| 8 | 1 | 0455 174 001 | Seal | |
| 9 | 1 | 0455 172 001 | Protection glass | |
| 10 | 1 | 0366 295 002 | Switch | |
| 11 | 1 | 0486 317 880 | Circuit board | For digital instrument , |
| 13 | 3 | 0455 226 010 | Spacer | For circuit board |



ba19s001



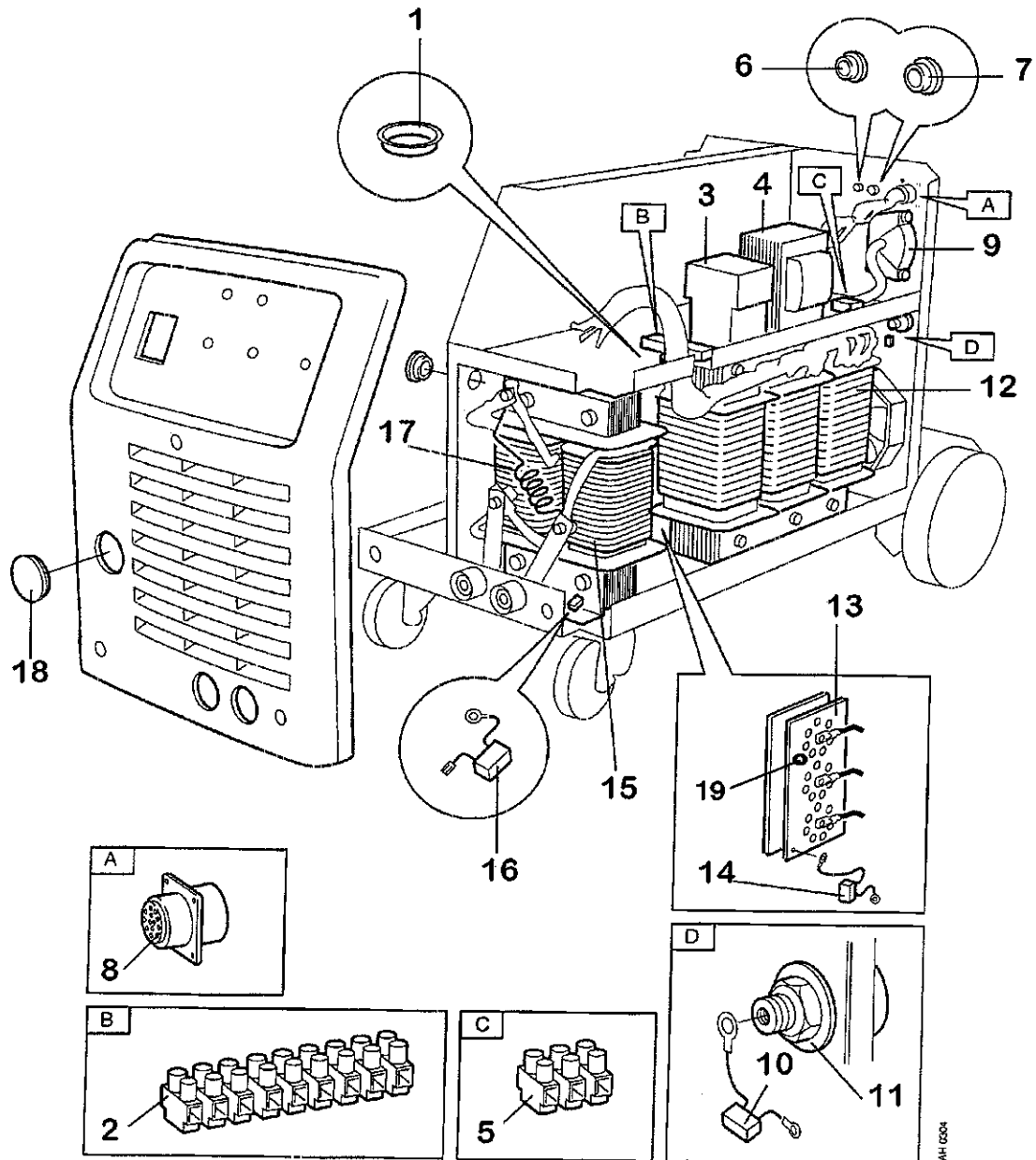
| Item no. | Qty | Ordering no. | Denomination | Notes |
|----------|-----|--------------|---------------------|-----------------|
| 1 | 1 | 0368 265 002 | Securing strap | |
| 2 | 1 | 0455 833 002 | Handle | |
| 3 | 1 | 0456 026 001 | Cover with text | |
| 4 | 1 | 0455 474 001 | Rear panel | |
| 5 | 1 | 0455 814 001 | Clamp | |
| 6 | 1 | 0456 025 001 | Side panel with txt | |
| 7 | 2 | 0455 467 001 | Castor wheel | ∅ 100mm h=125mm |
| 8 | 1 | 0469 516 003 | Shaft | |
| 9 | 2 | 0455 457 001 | Wheel | ∅ 200mm |
| 10 | 2 | 0192 859 126 | Locking washer | |
| 11 | 1 | 0469 684 001 | Shelf | |



ba19s00



| Item no. | Qty | Ordering no. | Denomination | Notes |
|----------|-----|--------------|------------------|-----------------------------------|
| 1 | 1 | 0192 041 139 | Grommet | |
| 2 | 1 | 0193 655 012 | Terminal | 12-pole |
| 3 | 1 | 0193 923 001 | Contactor | 400-415 V mains voltage |
| 4 | 1 | 0455 633 001 | Transformer | 255 VA |
| 5 | 1 | 0162 781 002 | Terminal | 3-pole |
| 6 | 1 | 0192 230 110 | Cover | ø 20mm |
| 7 | 1 | 0368 544 005 | Sleeve socket | 23-pole |
| 8 | | 0323 945 003 | Sleeve | |
| 9 | 1 | 0469 950 880 | Cable inlet | |
| 10 | 1 | 0467 911 881 | Capacitor | with cable lugs |
| 11 | 3 | 0160 362 881 | Terminal | OKC 50 |
| 12 | 1 | 0455 618 880 | Transformer | Complete, 400-415 V |
| 13 | 1 | 0455 815 881 | Diode bridge | Complete |
| 14 | 1 | 0469 380 881 | Capacitor | |
| 15 | 1 | 0455 328 880 | Inductor | |
| 16 | 1 | 0467 911 881 | Capacitor | |
| 17 | 1 | 0466 479 002 | Resistor | |
| 18 | 1 | 0192 230 117 | Cover plug | ø 50 mm |
| 19 | 1 | 0321 229 004 | Thermal cutout | Opens at 120° C |
| | | 0192 058 101 | Thermal compound | For fitting of the thermal cutout |



AH 0204

ba19s006

Spare parts Transmig 403S /403SW

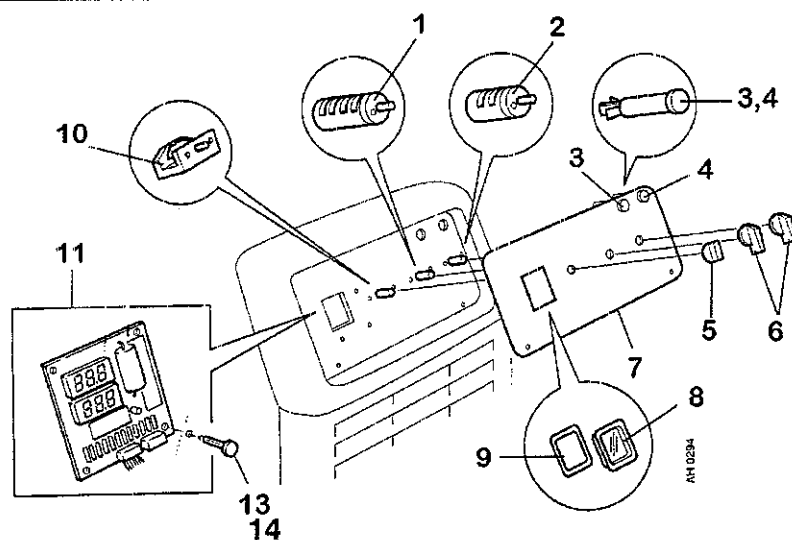
Ordering numbers for Transmig 353 /353W welding rectifiers

| Ordering no. | Denomination | Notes |
|--------------|--------------|-----------------------|
| 1415971 | TM 403S | 400-415 V 3~ 50/60 Hz |
| 1415972 | TM 403SW | 400-415 V 3~ 50/60 Hz |

Spare parts list

Spare parts can be ordered through the nearest Murex distributor.

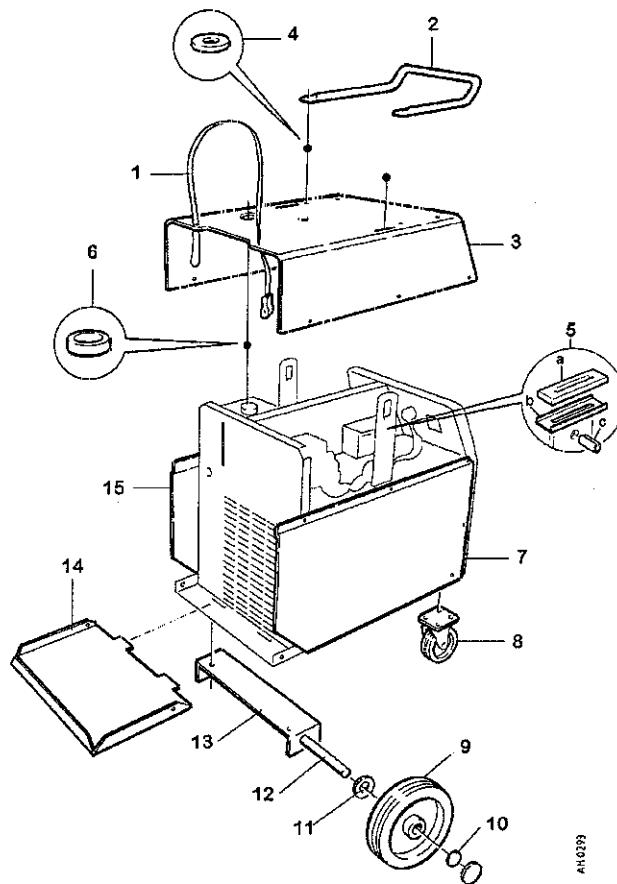
| Item no. | Qty | Ordering no. | Denomination | Notes |
|----------|-----|--------------|--------------------|-----------------------------|
| 1 | 1 | 0193 942 001 | Switch | 4 step, item 6 is included |
| 2 | 1 | 0193 945 001 | Switch | 10 step, item 6 is included |
| 3 | 1 | 0369 733 007 | Indicating lamp | 42 VAC, white |
| 4 | 1 | 0369 733 002 | Indicating lamp | 48 VAC, orange |
| 5 | 1 | 0366 296 001 | Knob | |
| 6 | 2 | | Knob | Included in items 1 and 2 |
| 7 | 1 | 0455 877 003 | Panel with text | |
| 8 | 1 | 0455 174 001 | Seal | |
| 9 | 1 | 0455 172 001 | Protection glass | |
| 10 | 1 | 0366 295 002 | Switch | |
| 11 | 1 | 0486 317 880 | Digital instrument | |
| 13 | 2 | 0455 226 010 | Spacer | For circuit board |
| 14 | 1 | 0455 226 004 | Spacer | For circuit board |



ba19s001



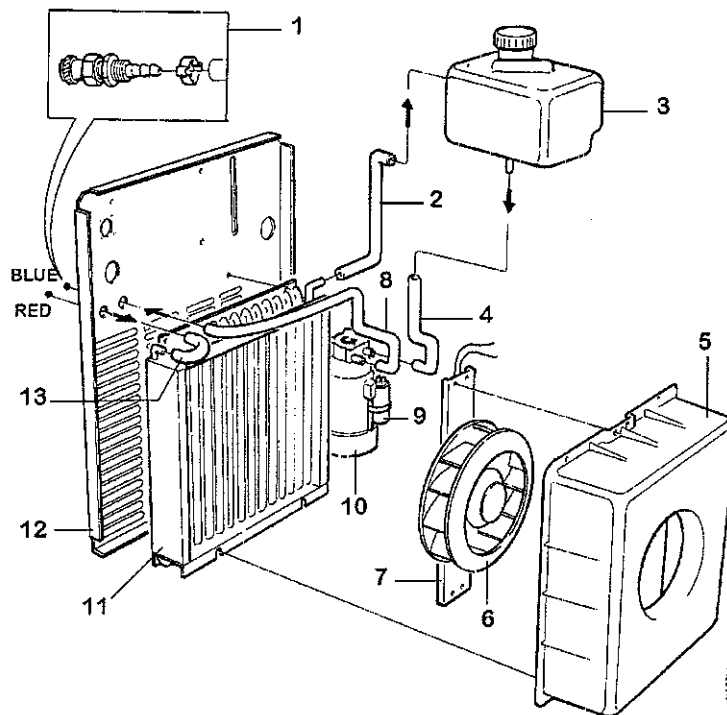
| Item no. | Qty | Ordering no. | Denomination | Notes |
|----------|-----|--------------|----------------------|-----------------|
| 1 | 1 | 0368 265 002 | Securing strap | |
| 2 | 1 | 0469 868 002 | Handle | |
| 3 | 1 | 0469 681 002 | Cover | |
| 4 | 4 | 0366 481 002 | Seal | |
| 5a | 2 | 0468 797 001 | Seal | |
| 5b | 2 | 0468 796 001 | Support plate | |
| 5c | 2 | 0211 103 005 | Roll pin | |
| 6 | 1 | 0366 481 003 | Seal | |
| 7 | 1 | 0456 811 001 | Side panel with text | Left |
| 8 | 2 | 0469 873 001 | Castor wheel | ∅ 125mm h=150mm |
| 9 | 2 | 0469 872 001 | Wheel | ∅ 250mm |
| 10 | 2 | 0192 859 126 | Locking washer | |
| 11 | 2 | 0215 100 037 | Washer | |
| 12 | 1 | 0469 516 002 | Shaft | |
| 13 | 1 | 0469 685 001 | Clamp | |
| 14 | 1 | 0469 684 001 | Shelf | |
| 15 | 1 | 0456 023 001 | Side panel with text | Right |



AN 0373



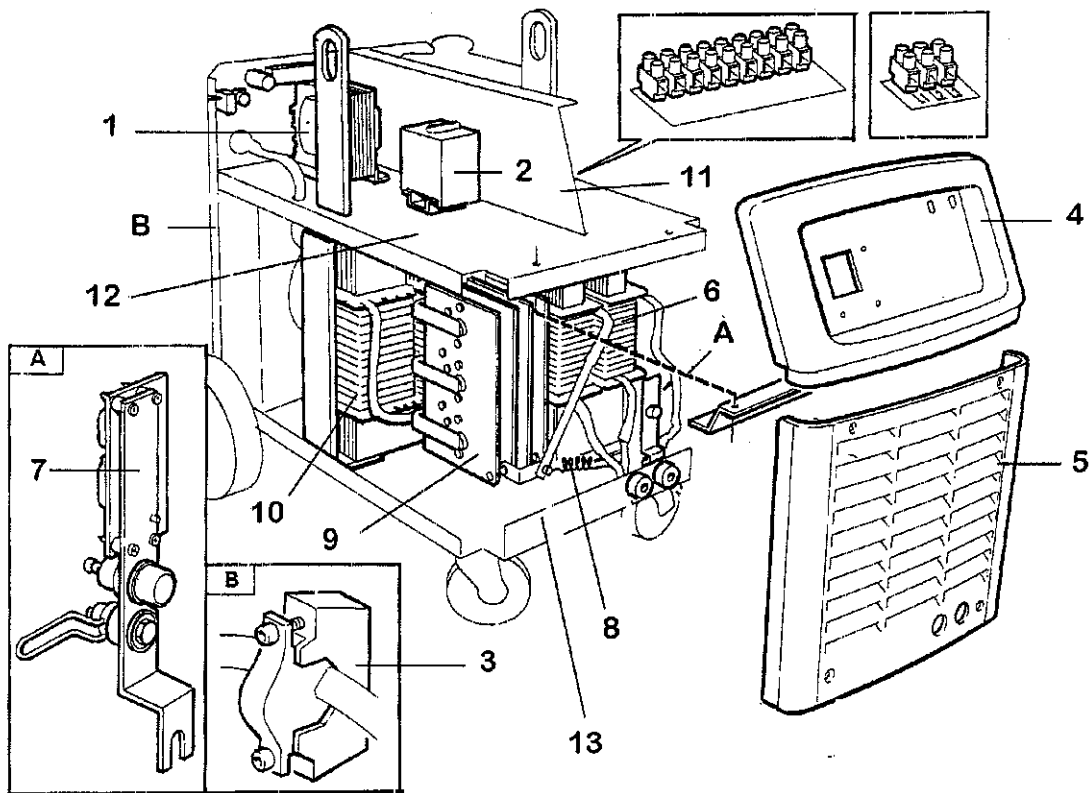
| Item no. | Qty | Ordering no. | Denomination | Notes |
|----------|-----|--------------|----------------------|---------------------|
| 1 | 1 | 0365 803 008 | Quick connector | Female, red |
| 1 | 1 | 0365 803 009 | Quick connector | Female, blue |
| 2 | 1 | 0455 162 001 | Hose | |
| 3 | 1 | 0469 689 001 | Water tank | |
| 4 | 1 | 0455 164 001 | Hose | |
| 5 | 1 | 0469 893 001 | Fan housing | |
| 6 | 1 | 0369 827 001 | Fan | |
| 7 | 1 | 0455 165 001 | Attachment | |
| 8 | 1 | 0455 163 001 | Hose | |
| 9 | 1 | 0191 085 206 | Capacitor | 5 μ F 400 V |
| 10 | 1 | 0469 692 001 | Pump | 1A 0.2kW 230V 50Hz, |
| 11 | 1 | 0469 688 001 | Cooler | |
| 12 | 1 | 0469 677 001 | Rear panel with text | |
| 13 | 1 | 0455 161 001 | Hose | |



ba19s003

| Item no. | Qty | Ordering no. | Denomination | Notes |
|----------|-----|--------------|--------------------------|---------------------------------------|
| 1 | 1 | 0469 882 001 | Control transformer | 400-415 V (replacing 0455 628 001) |
| 2 | 1 | 0193 923 001 | Contacteur | 400-415 V |
| 3 | 1 | 0469 950 880 | Cable inlet | |
| 4 | 1 | 0469 704 002 | Front panel | |
| 5 | 1 | 0469 703 002 | Front grill | |
| 6 | 1 | 0455 627 880 | Inductor | |
| 7 | 1 | 0367 070 881 | Inductor short-circuiter | |
| 8 | 1 | 0466 479 001 | Resistor | |
| 9 | 1 | 0455 488 880 | Diode bridge | |
| 10 | 1 | 0455 498 881 | Transformer | 400-415 V |
| 11 | 1 | 0469 678 001 | Centre plate | |
| 12 | 1 | 0455 830 001 | Intermediate plate | |
| 13 | 1 | 0469 672 001 | Base plate | |

0486364880 EMC FILTER (API)



ba19s004

