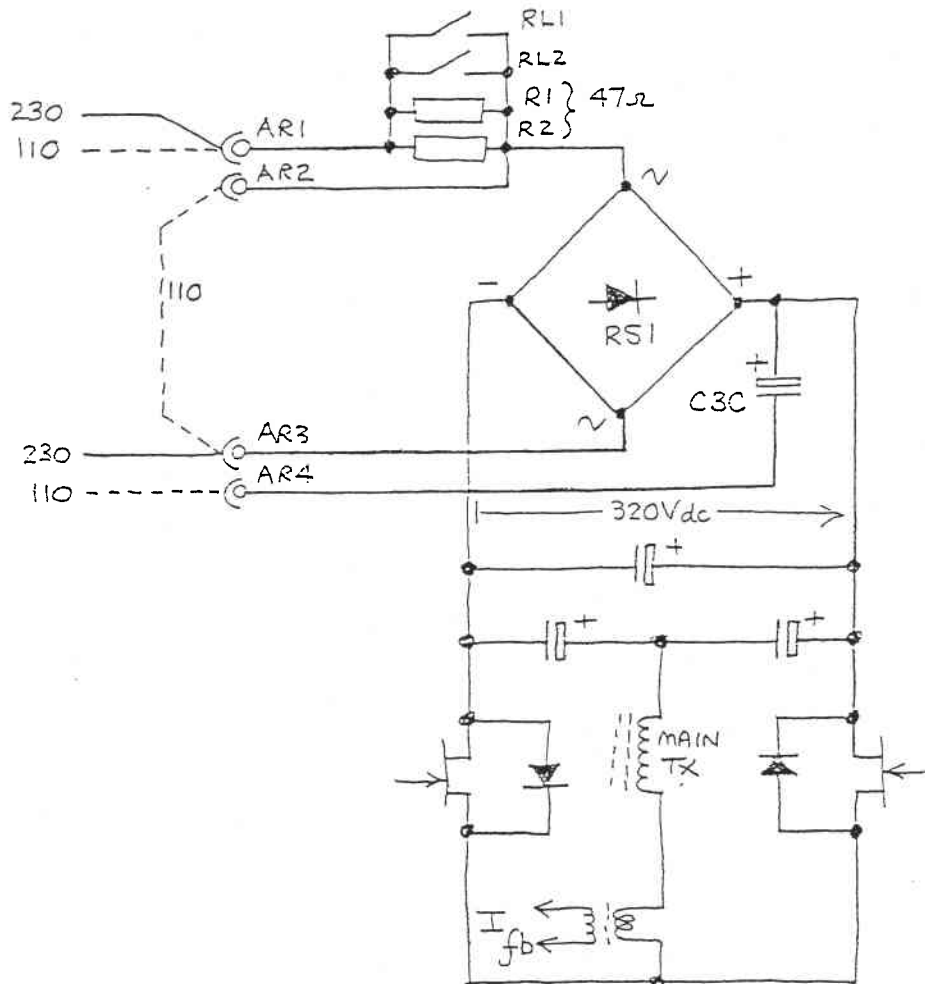


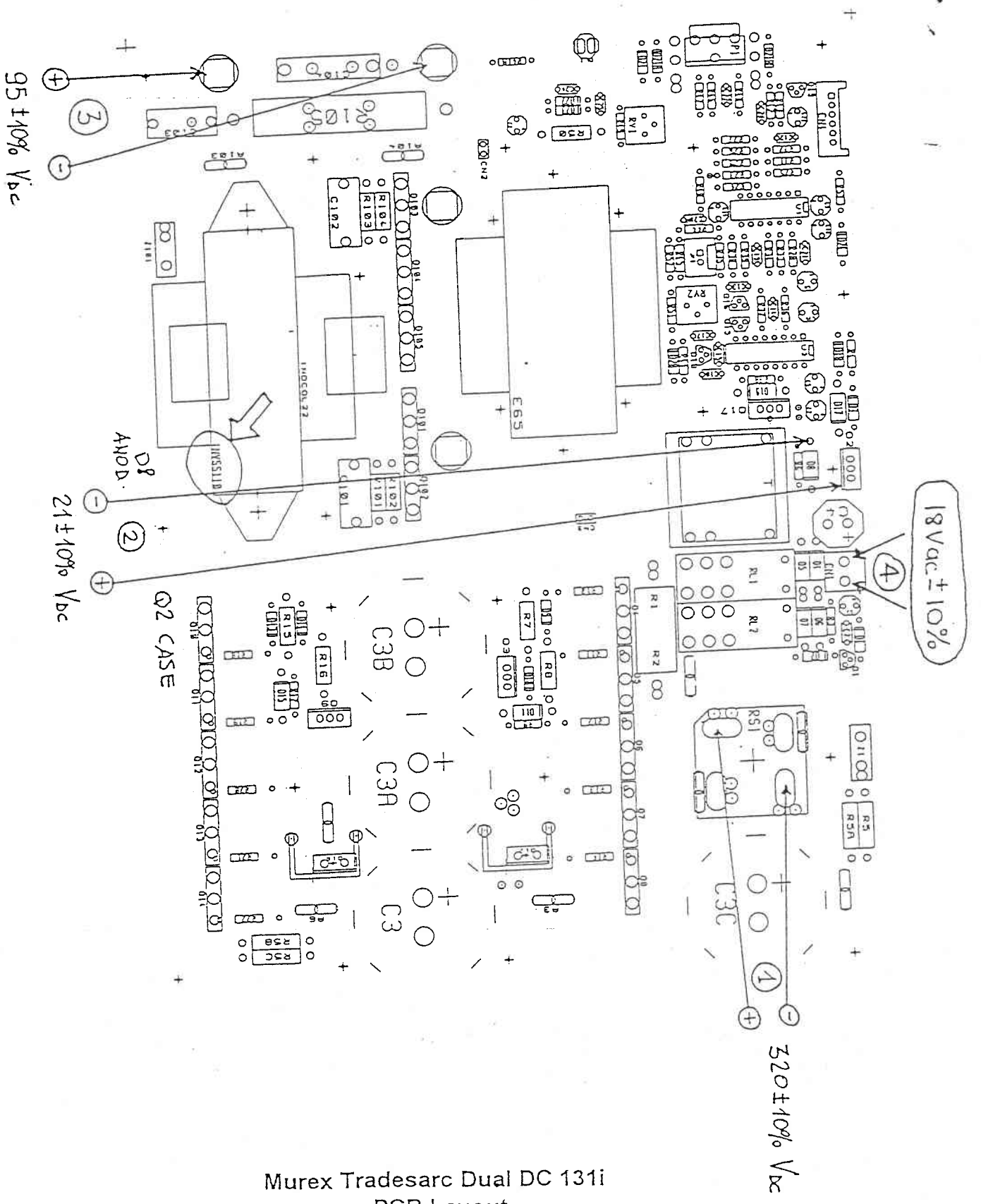
SERVICE NOTES

Tradesarc Dual 131i

WARNING - THIS PRODUCT IS A PRIMARY INVERTER, CONTROL CIRCUITRY IS AT MAINS POTENTIAL!!

Open Circuit Voltage	:	95Vdc \pm 10%
Aux Tx Secondary	:	18Vac \pm 10% (see ④ on pcb layout)
Current Control	:	0 - 5Vdc (100K Ω pot)
V _{UNREG}	:	21Vdc \pm 10% (see ② on pcb layout)
V _{DC}	:	320Vdc \pm 10% (see ① on pcb layout)





Murex Tradesarc Dual DC 131i
PCB Layout